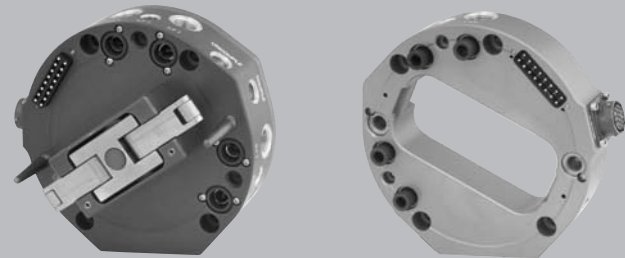


# XC50

## Tool Changers designed to minimize downtime

Applied Robotics offers a full line of robotic tool changers designed to minimize assembly line downtime and increase productivity.



### Features and Benefits

- When you're doing batchmode manufacturing, you can reduce line changeovers from hours to seconds.
- When you're maintaining or repairing tools you can have a second identical tool available, that won't need recalibration.
- Now your robot can perform multiple tasks with a simple tool change.
- Position pick-up and release of tools for easy programming

### Applications

- Material removal
- Pick and place
- Material Handling

Not exactly what your application requires? Applied Robotics can design a solution that meets your particular application needs.

### SPECIFICATIONS

Moment Resistance Mx & My	see moment charts	
Torque Resistance Mz	690 N-m	6106 in-lb
Maximum Axial Tensile Force (until separation of unit occurs*)	8786 N @ 6 bar couple port input pressure	1975 lb @ 87 psi couple port input pressure
Position Repeatability X & Y	+/- 0.025 mm	+/- 0.001 in
Position Repeatability Z	+/- 0.013 mm	+/- 0.0005 in
Center of Mass (from robot faceplate)	53 mm	2.1 in
Weight (with robot and tool adaptor plate)	4.8 kg	10.6 lb
Coupling Direction	Axial	

Note: \*Separation during extreme overloads provides a "clutching" effect to help prevent damage

### ROBOT-TO-TOOL UTILITIES

User Electrical Lines	up to 16 @ 5 amps each	
User Pneumatic Ports	(4) 3/8" BSPP or NPT	
Cv	0.8 per foot	
Pressure range	1-10 bar	15-145 psi

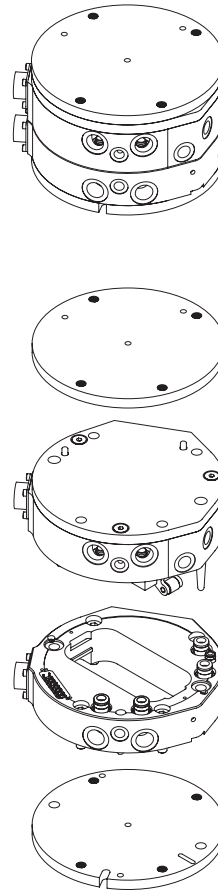
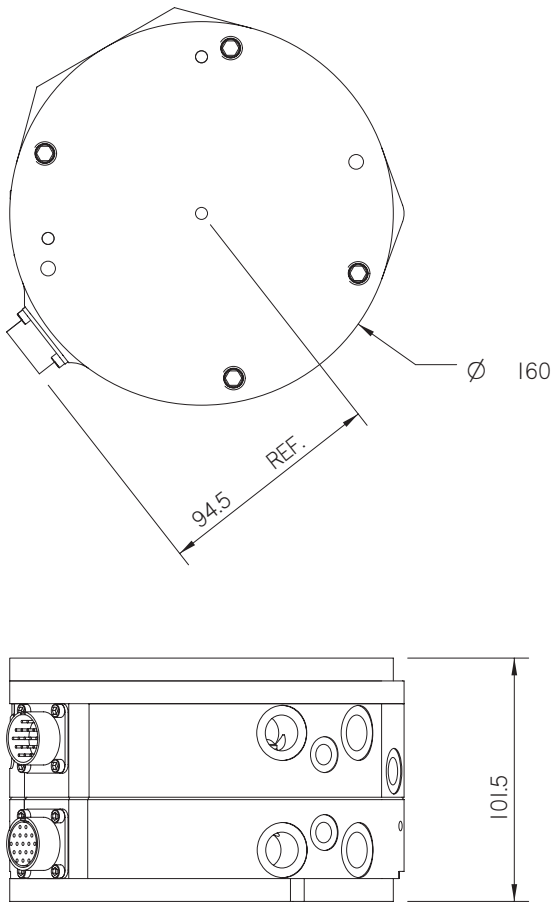
### ACTUATION

Couple/Uncouple Ports	1 each 1/4" NPT or BSPT	
Nominal Working Pressure Range	6 bar +/-1	87 +/- 15 psi
Actuation Mechanism Position Sensor (indicates coupling fingers retracted)	Magnetic Reed Switch 10 - 100 volts DC max 3 watts (250 mA max switching current)	

Note: Specifications provided are maximum recommended limits under static conditions. For correct product sizing, consideration must be given to all applicable dynamic forces, including manipulator inertia, tooling configuration and external process forces.

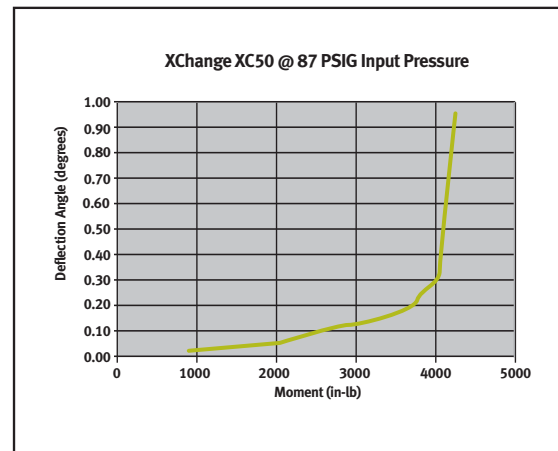
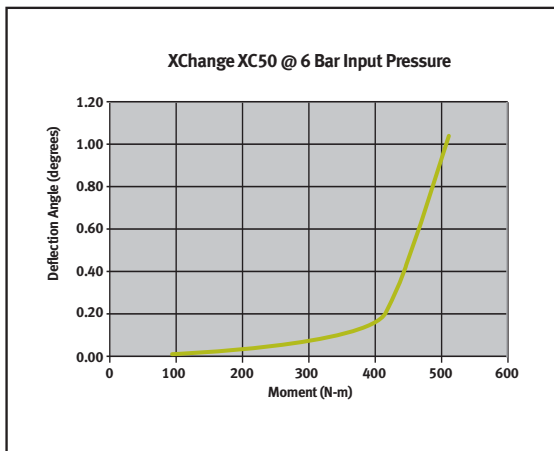
Note: For correct product sizing, please contact our Tech Support staff at tech-support@arobotics.com or via telephone at (800)309-3475 in NY or in MI at (248)358-3677.

# Engineering Data



All dimensions in millimeters

## Moment Charts (Moment/Deflection curve shown represents the orientation that yields maximum deflection)



648 Saratoga Road  
 Glenville, NY 12302 USA  
 518 384 1000 tel  
 518 384 1200 fax

29193 Northwestern Hwy. #509  
 Southfield, MI 48034 USA  
 248 358 3677 tel  
 248 358 2654 fax

[www.arobotics.com](http://www.arobotics.com)

