

Innovation Matrix

Product Catalog

Introducing



Bridging the Pacific with Automation Technology

HEXSIGHT

by ADEPT TECHNOLOGY, INC.
High performance
machine vision
software

Speed Accuracy Performance

HexSight™ by Adept is a comprehensive machine vision library for robust, affordable, and accurate part finding and inspection. The powerful Locator tool accurately finds and positions objects regardless of their scale and rotation. HexSight provides reliability and performance in even the harshest environments.

What HexSight Can do for You

Designed for embedding, HexSight vision tools are easily integrated and customized. Ensure a rapid return on your investment by choosing HexSight's open architecture and powerful algorithms.

- Reduce downtime with HexSight robustness and reliability
- Easily integrate into new and existing systems
- Rapidly prototype vision applications
- Embed vision into Smart devices

What HexSight Offers

- Unique Locator tool provides robust, contour-based object location
 - + Advanced multi-model capability - differentiates highly similar parts
 - + Recognizes multiple objects regardless of their orientation or scale
 - + Built-in calibration ensures highly accurate and repeatable results
 - + Fully editable models
- Machine vision tools packaged as ActiveX controls or C++ libraries
- Compatibility with Windows 2000/XP, DevStudio 6.0, DevStudio .NET
- Open architecture compatible with off-the-shelf frame grabbers and cameras
- Complete suite of inspection tools

What's New in HexSight 3.3

- All HexSight tools available as C++ libraries
- DevStudio .NET compatibility: Visual Basic, C++, C#
- New Basic and Advanced setup modes for Locator property pages
- Locator speed enhancement and added versatility for complex vision applications
- New application examples show integration of HexSight into OEM projects



ADEPT
TECHNOLOGY CANADA CO.
a subsidiary of Adept Technology, Inc.

[Specifications]

HexSight Locator - Geometric Object Location

Part Finding

- Model-based object finding and tool positioning
- Automatic model-teaching and fully editable models
- Portable models: Save and reuse across applications
- Multi-model processing: Simultaneously locate and sort multiple objects
- Advanced disambiguation between very similar objects

Speed, Accuracy, and Performance

- Translation repeatability: 1/40th of a pixel
- Rotation repeatability: 0.01 degree
- Fast parallel processing using MMX and SSE extensions
- Built-in calibration: Correct for Distortion, Perspective, and X-Y pixel ratio
- Image-based calibration intrinsically used by all tools

Inspection and Image Processing Tools

HexSight provides a complete suite of inspection and image processing tools. Multiple coordinate systems: world, image, object and tool, allow easy interpretation and use of results in pixels or calibrated units.

- Geometric Finders based on Locator technology: find, build and combine end points, lines and arcs
- Grey-scale Inspection: Linear and Arc Caliper and Edge Locator, Blob Analyzer, Pattern Locator
- Image Processing Tool for arithmetic, filtering, logical, and morphological operations
- Sampling Tool, Sharpness and Histogram analysis tools

All tools can be model-based and automatically referenced to the position of found objects.

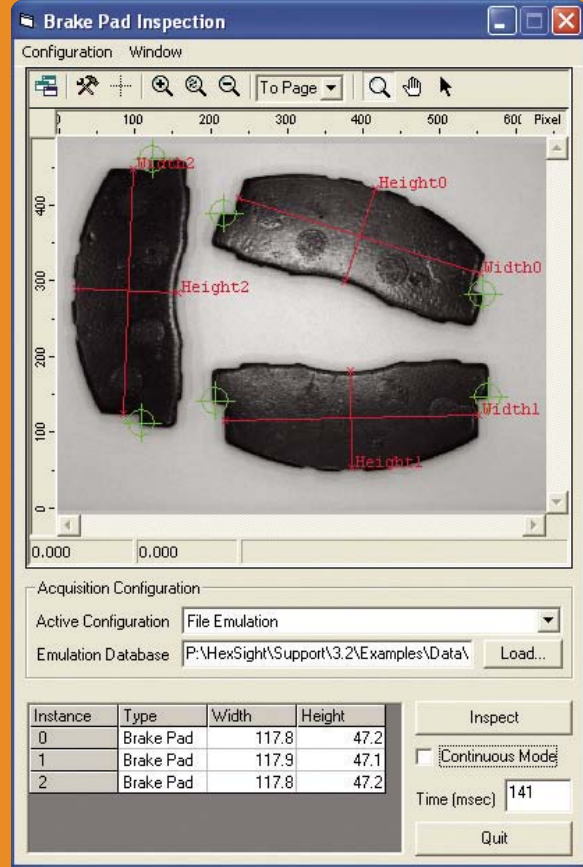
Camera and Frame Grabber Support

Frame Grabbers

- Coreco Imaging: IC-ASYNC, PC-DIG, PCVision
- Data Translation: DT-3152, DT-3155, DT-3157
- Imagenation: PX610A, PCX200
- Matrox: Meteor-II/Standard, Meteor-II/Multi-Channel, Meteor-II/Digital, Orion
- Opteon: DepictMaster 4X1, USB 2.0, Ethernet

Cameras:

- All cameras compatible with the frame grabbers listed above
- IEEE 1394 and USB Cameras with a DirectShow driver



Model-based tools are applied to found object in its "as found" position

Requirements

Hardware

- Pentium II or higher
- Disk space: 15 MB - 200 MB depending on selected components
- Memory (RAM): 128 MB
- Minimum resolution: 1024 x 768 pixels

Software

- Operating system: Windows 2000/XP
- DevStudio 6.0, DevStudio .NET, or other ActiveX-compliant environments

Note: Above requirements apply to ActiveX Library development



ADEPT
TECHNOLOGY CANADA CO.
a subsidiary of Adept Technology, Inc.

www.adept.com

www.innovation-matrix.com



Innovation Matrix, Inc.

1715 Junction Avenue, Suite B, San Jose, CA 95112 USA

TEL: 408-329-4422

FAX: 408-716-2553

sales@innovation-matrix.com

IM Japan: japan@innovation-matrix.com

IM Taiwan: taiwan@innovation-matrix.com

IM Beijing: beijing@innovation-matrix.com