

Innovation Matrix

Product Catalog

Introducing



Bridging the Pacific with Automation Technology

AdeptSight™ 2.0

AdeptSight provides easy-to-use, PC-based, vision-guidance and inspection in an out-of-the-box solution for all Adept robots and controls, as well as a powerful framework that can be used to develop customized vision guidance and inspection applications. It allows quick development of robust and accurate vision-guided and inspection applications thanks to a simple graphical user interface.

Add vision capabilities that will help you deal with smaller parts and tighter tolerances, achieve higher quality products without the need for complex programming or additional development tools. AdeptSight simplifies deployment in difficult conditions thanks to robust vision algorithms that are tolerant to poor lighting, noise, and occlusions.

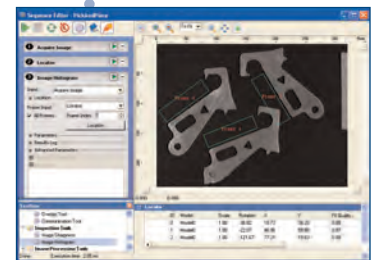
Make the development and use of your vision-guided and inspection applications simpler, faster and more powerful

- Increase your application's performance, ease of use, and accuracy
- Reduce complexity, reduce development time
- Lower downtime and increase ROI for end-users
- Leverage industry standards
- Create value in the manufacturing chain with a cost-effective solution

ADEPTSIGHT AT-A-GLANCE



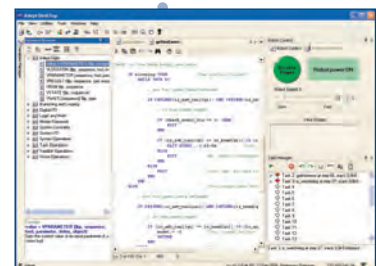
CAMERA



ADEPTSIGHT



PC RUNNING ADEPTSIGHT AND ADEPT DESKTOP



ADEPT DESKTOP

ADEPT SMARTCONTROLLER CX



ADEPT ROBOT



AdeptSight™ 2.0

Features

Fast, Accurate Parts Location

- Model-based object finding
- Automatic model-teaching and fully editable models
- Multi-model processing: Simultaneously locate and sort multiple objects
- Advanced disambiguation between very similar objects
- Translation repeatability: 1/40th of a pixel
- Rotation repeatability: 0.01 degree

Advanced Inspection Capabilities

- Includes inspection tools such as Blob Finder, Calipers, Edge Locators and finder tools: Point, Line and Arc
- Extensive set of image processing tools: Image Processing, Histogram, Sharpness, Sampling
- Color option adds Color Matching Tool and enables color processing for most inspection tools
- Frame-based positioning automatically positions tools relative to results of other vision tools
- Results filtering tool simplifies setup of Pass-Fail inspection applications

Vision Guidance and Calibration

Application Development

- Vision application development in point-and-click environment
- Vision applications can also be created in an integrated development environment such as Microsoft Visual Studio
- Application information saved to project files that allows import/export between systems
- Integration with V+ or MicroV+ programming language for full control of vision processing
- Support for various levels of event and results logging

Calibration

- Accurate calibration of the camera, robot, belt (in conveyor tracking applications), and camera-to-robot workspace
- Wizard-based calibrations do not require prior calibration experience by the user
- Calibration corrects for non-centered robot end-effectors
- Advanced calibration wizards support arm-mounted, tool-mounted and upward-facing camera positioning

Conveyor Tracking

- High performance conveyor tracking option supporting communication to up to 4 Adept SmartController CX robot controllers for applications requiring load balancing

Complete Vision Guided Robot System

- Single package including application toolset, vision software, camera, lens, and accessories
- Delivered, supported and maintained as a single pre-tested product bundle from Adept

New in AdeptSight 2.0

- > Color option adds acquisition and calibration of color images, Color Matching Tool, and color processing by most inspection tools.
- > Advanced calibration wizards extend support for almost any camera position: arm-mounted, tool-mounted, and upward facing to enable development of vision-on-the-fly applications.

Package Includes

- AdeptSight software
- Camera mounting kit
- FireWire camera, 640 x 480 or 1392 x 1040, with 16 mm lens
- FireWire cable (10m)

AdeptSight 2.0 Requirements

Hardware

- Controller SmartController or AIB
- Processor Intel® Pentium 4 2 GHz and higher. (Recommended)
(Note: AdeptSight will work properly with slower CPUs. Vision application performance is directly related to CPU performance. Please consult your Adept applications engineer for more details)
- Disk Space / Memory 500 MB / 256 MB
- Monitor XGA resolution 1024x768 (recommended) (SVGA resolution minimum 800x600)
- I/O IEEE 1394 (FireWire) port or Ethernet (10/100/1000) network card
USB port

Software

- .NET Framework 2.0 (incl. in installation of AdeptSight 2.0)
- Windows® XP (SP2) or Windows® 2000 (SP4)
- Adept DeskTop: 4.2 (incl. on the AdeptSight CD)

Controller Requirements

- V+ 16.3C3 and higher for Adept SmartController systems
- MicroV+ 2.2C (Adept Cobra i600/i800 robots)

Support

- Benefit from Adept's award winning technical support
- Integrated help, tutorials, application examples



Adept Technology, Inc. 3011 Triad Drive, Livermore, CA 94551

Tel: 925-245-3400 Fax: 925-960-0452 Email: info@adept.com

www.adept.com

©2006 Adept Technology, Inc. All rights reserved. Adept and the Adept logo are registered trademarks, and the AdeptSight is a trademark of Adept Technology, Inc. All other trademarks are the property of their respective holders.

ASDSF0906

www.innovation-matrix.com



Innovation Matrix, Inc.

1715 Junction Avenue, Suite B, San Jose, CA 95112 USA

TEL: 408-329-4422

FAX: 408-716-2553

sales@innovation-matrix.com

IM Japan: japan@innovation-matrix.com

IM Taiwan: taiwan@innovation-matrix.com

IM Beijing: beijing@innovation-matrix.com